

---

## O Caminho das Estrelas

---

### **MATTUCCI MELANI**

Università della Svizzera Italiana

The project consists in a night pathway to observe and contemplate the sky. The tour starts from Cromlech do Xerez and ends in the water, with the intention of combining ground-sky and water-sky.

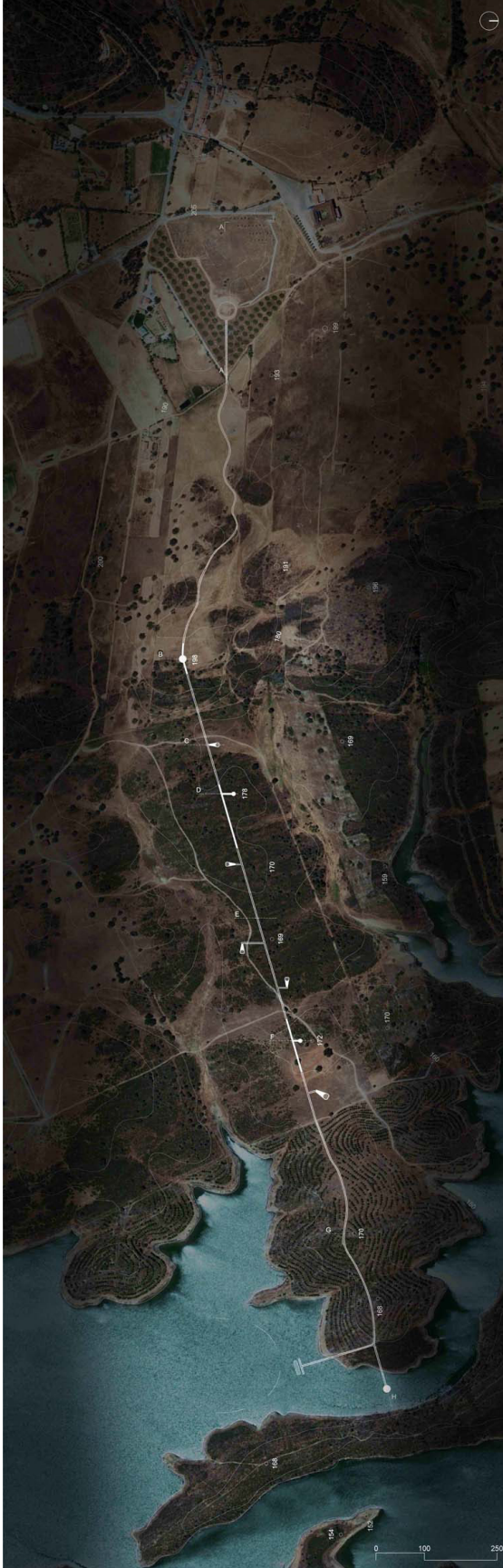
The first part of the path, more curvy than other parts, allow the visitor to relax, to enjoy the smell and to hear the sounds of the landscape into the night.

In the second part of the path, that is more linear in way to help to maximize the concentration in the contemplation of the sky, are developed emotional and atmospheric rooms for the observation of celestial bodies.

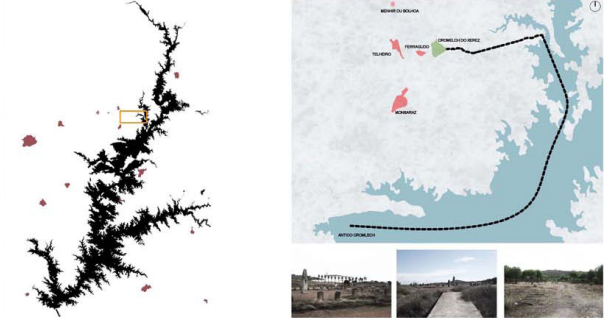
Finally, the last section of the path, nestled into a pine forest that ends with a room on the water, where you can observe the movement of celestial reflection. The trail takes advantage of the morphology of the land, sometimes it goes deep down in the underground and other times it re-emerges on the surface.

The path is made of ground while the rooms along the path are made in concrete with pigment similar to the ground and finally the wooden room on the water.

# O caminho das estrelas



# LAKE OF ALQUEVA: A NIGHT PATHWAY TO CONTEMPLATE THE DARK SKY



**DARK SKY IN ALQUEVA, PORTUGAL**  
 Alqueva is the first site in the world which received the 'Starlight tourism destination', a certification supported by UNESCO, UNWTO E IAC. Its sky is characterized by a low rate of pollution that permits an excellent contemplation of the stars.  
 The tourism, Alqueva is strongly based on this important resource. Alqueva has a natural and cultural rich heritage, for example, it is possible to see some megalithic ruins related to the heavenly movements.

**O CAMINHO DAS ESTRELAS**  
 The project consists in a **night pathway** to observe and contemplate the sky.  
 The tour starts from Cromlech do Xerez and ends in the water, with the intention of combining ground-sky and water-sky.  
 The first part of the path, more curvy than other parts, allow the visitor to relax, to enjoy the smell and to hear the sounds of the landscape into the night.  
 In the second part of the path, that is more linear in way to help to maximize the concentration in the contemplation of the sky, are developed **emotional and atmospheric rooms** for the observation of celestial bodies.  
 Finally, the last section of the path, nestled into a pine forest that ends with a room on the water, where you can observe the movement of celestial reflection.  
 The trail takes advantage of the morphology of the land, sometimes it goes deep down in the underground and other times it re-emerges on the surface.  
 The path is made of ground while the rooms along the path are made in concrete with pigment similar to the ground and finally the wooden room on the water.

**CROMLECH DO XEREZ, PORTUGAL**  
 Dated between the beginning of the VI millennium B.C. and the middle of the III millennium B.C., Cromlech do xerez is considered **national heritage**.  
 It was discovered in 1969 by the researcher and archaeologist Dr. Pires Gonçalves.  
 In 1972 was done a reconstruction of the menhirs of the site. That work, based on doubtful scientific criteria, did not found any consensus among experts in the field.  
 After the construction of a dam near the Cromlech site, it was moved near the town of Monsaraz, in way to prevent the risk of a flood.



The Cave Room



The Conical Room



The Room on the Water

